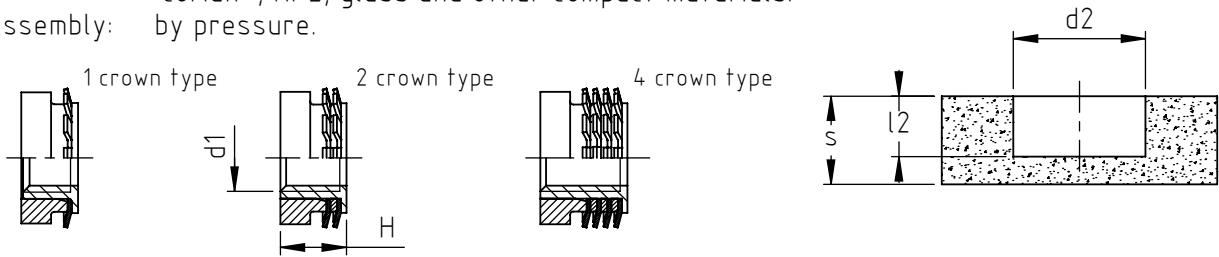


Application: marble, granite and stone materials, as well as on composites, carbon, corian®, HPL, glass and other compact materials.

Assembly: by pressure.



Series IM (flat head)

code **	thread ***d1	min. thicknesses S	insert length H	hole diameter d2 +0,2/-0,2	hole depth l2 +1,0/-0,0	crowns number	average assembly press-in force * kN	average pull-out strenght * kN
IM4S/___/H8.5	M4	11	8	12	8,5	4	1	3,5
	M5							
	M6							

SPECIALINSERT® COMMITS ITSELF TO CONTINUOUSLY IMPROVE ITS PRODUCTS. IT RESERVES THE RIGHT TO CHANGE THEIR TECHNICAL AND STRUCTURAL CHARACTERISTICS WITHOUT PRIOR NOTICE. ALL RIGHTS ARE RESERVED AND THE DUPLICATE, EVEN PARTIAL, OF THESE DOCUMENTS, AS WELL AS ITS DISTRIBUTION TO THIRD PARTIES, ARE FORBIDDEN, UNLESS OTHERWISE AND EXPRESSLY AUTHORIZED BY SPECIALINSERT.

Non binding dimensions, expressed in mm.

\* Values reported above are indicative and not binding as results from laboratory tests that might not be repeatable in different conditions.

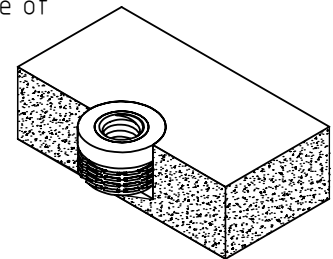
It is recommended to perform assembly test to define the correct value.

\*\* Reference to be completed by thread d1.

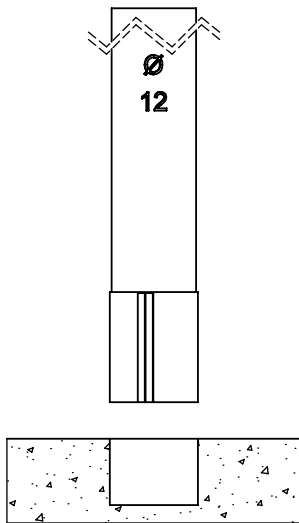
\*\*\* "No go" thread to avoid the bush extraction effect or breakage of panel caused by inappropriate screw length.

Standard       On demand

Material: bush: stainless steel      Finishing: natural  
 crowns: stainless steel  
 body: white color plastic

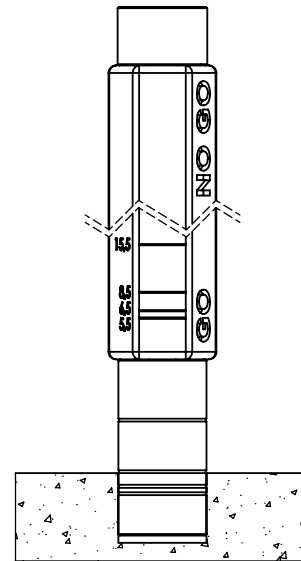


Prepare the hole in the receiving material.

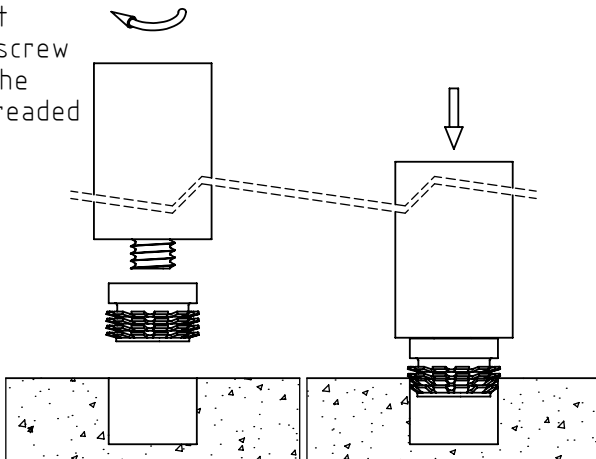


Check the correct hole size with the GO/NO GO gauge. On the GO side of the gauge there are reference marks to check the correct hole depth.

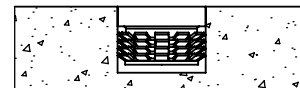
GAUGE SERIES:  
TKN12-IM\_S  
TKN12-IM\_T



For a correct installation screw completely the insert on threaded mandrel.

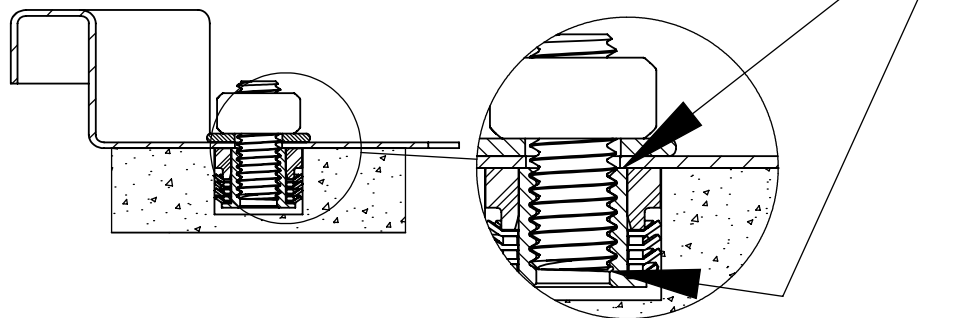


The insert is ready for the assembling.



The insert is structurally fastened and assembled.

For a proper assembly it is recommended to screw the pin on the total length of the useful thread and that the element to be fixed is in contact with the internal metal bush of the insert Keep-Nut®



SPECIALINSERT® COMMITS ITSELF TO CONTINUOUSLY IMPROVE ITS PRODUCTS. IT RESERVES THE RIGHT TO CHANGE THEIR TECHNICAL AND STRUCTURAL CHARACTERISTICS WITHOUT PRIOR NOTICE. ALL RIGHTS ARE RESERVED AND THE DUPLICATE, EVEN PARTIAL, OF THESE DOCUMENTS, AS WELL AS ITS DISTRIBUTION TO THIRD PARTIES, ARE FORBIDDEN, UNLESS OTHERWISE AND EXPRESSLY AUTHORIZED BY SPECIALINSERT.